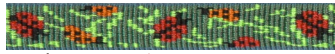


New! **Trio patterns** are available in all three widths!

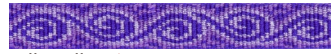
Lupine® ORIGINALS Spring 2015



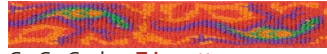
1/2" - For cats, puppies and small dogs



Beetlemania - **Trio pattern**



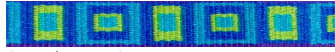
Jelly Roll - **Trio pattern**



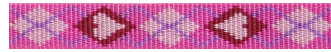
Go Go Gecko - **Trio pattern**



Bling Bonz - **Trio pattern**



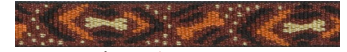
Sea Glass - **Trio pattern**



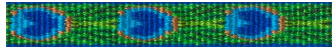
Puppy Love - **Trio pattern**



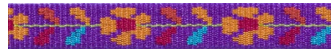
Lollipop



Down Under - **Trio pattern**



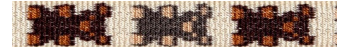
Tail Feathers - **Trio pattern**



Spring Fling



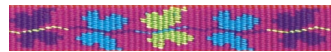
Big Easy



Teddy Bears



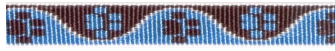
Dapper Dog - **Trio pattern**



Wing It



Candy Apple

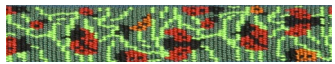


Muddy Paws

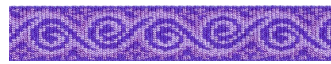


Tickled Pink

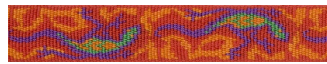
3/4" - For most sizes of dogs



Beetlemania - **Trio pattern**



Jelly Roll - **Trio pattern**



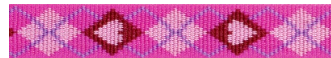
Go Go Gecko - **Trio pattern**



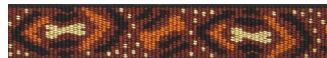
Bling Bonz - **Trio pattern**



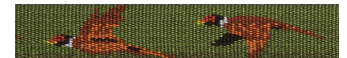
Sea Glass - **Trio pattern**



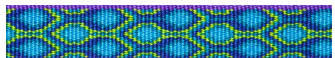
Puppy Love - **Trio pattern**



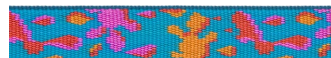
Down Under - **Trio pattern**



Fly Away



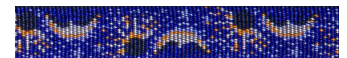
Rain Song



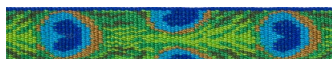
Wet Paint!



Heart 2 Heart



Starry Night



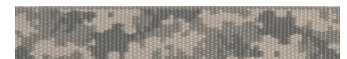
Tail Feathers - **Trio pattern**



Tickled Pink



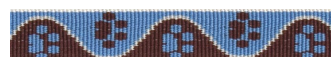
Crazy Daisy



ACU

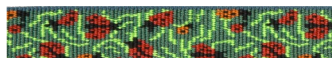


Dapper Dog - **Trio pattern**



Muddy Paws

1" - For medium & larger dogs



Beetlemania - **Trio pattern**



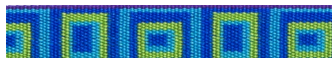
Jelly Roll - **Trio pattern**



Down Under - **Trio pattern**



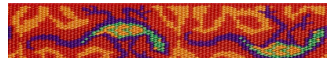
Bling Bonz - **Trio pattern**



Sea Glass - **Trio pattern**



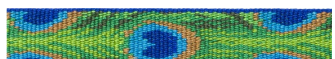
Puppy Love - **Trio pattern**



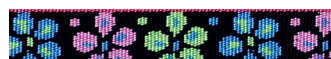
Go Go Gecko - **Trio pattern**



Brook Trout



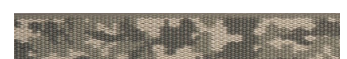
Tail Feathers - **Trio pattern**



Flower Power



Flower Box



ACU



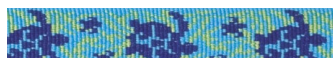
Dapper Dog - **Trio pattern**



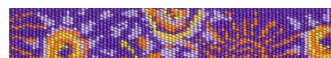
Plum Blossom



Shadow Hunter



Turtle Reef



Sunny Days

Proudly built in New Hampshire. Guaranteed (Even if chewed)®

For more information visit LupineDealer.com or call 1-800-228-9653 Monday - Friday 9 am to 5 pm EST

ORIGINALS



ORIGINALS

Our best-known and best-selling line! **Originals** woven patterns are durable and dynamic. In a range of colors and themes, to compliment any coat color.

New! Trio patterns- 9 designs are now available in all three widths.

Guaranteed (Even if Chewed)[®]

Turn sheet over to view all 52 patterns!



eco

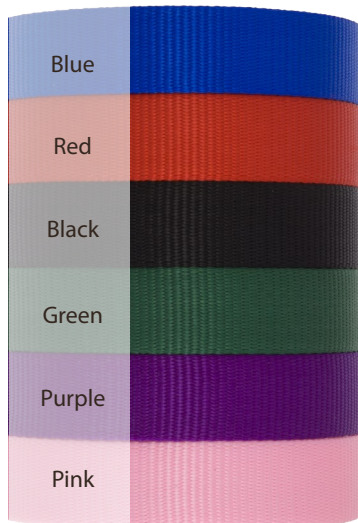
Eco products are made from recycled plastic bottles. They have a unique two-tone weave that is soft yet strong.

Guaranteed (Even if Chewed)[®]
 9 designer colors in all three widths.

eco



basics



basics

Traditional solid color nylon products proudly built with quality workmanship right here in New Hampshire.

Guaranteed (Even if Chewed)[®]

6 popular colors in all three widths.



CLUB

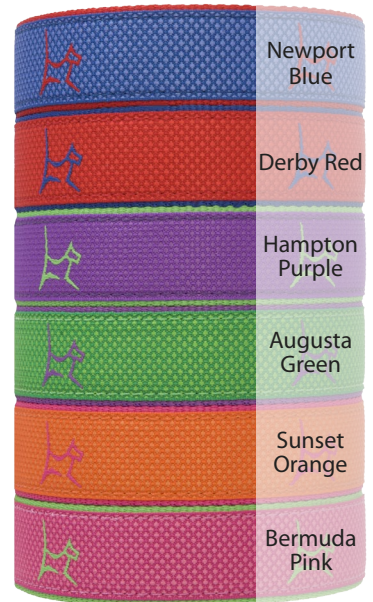
A luxurious new collection for 2015!

Club products are made using a soft padded material with the distinctive look and feel of a polo shirt.

Guaranteed (Even if Chewed)[®]

6 great colors in all three widths.

CLUB



Blaze Orange is available in 3/4" and 1".